

**KÄRCHER**

# POWER FOR EVERYTHING YOU PLAN TO DO

The Holder S 75 -  
powerful and pavement-friendly



# THERE'S SOMETHING FOR EVERYONE. KÄRCHER MUNICIPAL.

The right machine at the right time in the right place: with Kärcher Municipal machines, you have everything you need to complete your diverse daily tasks efficiently and comfortably. Climb aboard!



## HOLDER S 75

- 4 Benefits at a glance
- 6 Vehicle design
- 8 Performance
  
- 16 Comfort cab
- 20 Traction drive
- 24 Safety
  
- 26 Maintenance and service
- 28 Technical data
- 30 Product overview

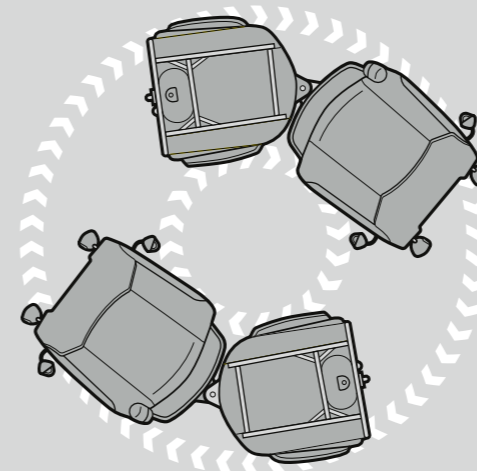


# THE HOLDER S 75





# KNOWS YOUR HOME TOWN AS WELL AS YOU DO



**The Holder S 75 combines superior performance with compact design perfect for urban settings.**

We may not know where in the world you are clearing paths, de-icing pedestrian zones or tending green spaces. But we do know what makes a perfect implement carrier for your municipality: high power and durability, manoeuvrability and pavement-friendly design, sophisticated technical solutions, quick implement changes and straight-forward operation.

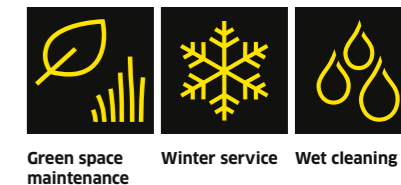


The Holder S 75 has all this and more. Its articulated steering provides the agility, precision and tracking required for perfect results. The permanent all-wheel drive optimally distributes the power of the 75 hp engine to all four wheels. The compact width of minimum 1.31 m (depending on tyres) enables you to reach every nook and cranny in town. And, best of all, from the comfort of your cab, you can steer through even the toughest jobs with ease.



# SUPERIOR PERFORMANCE ALL YEAR ROUND

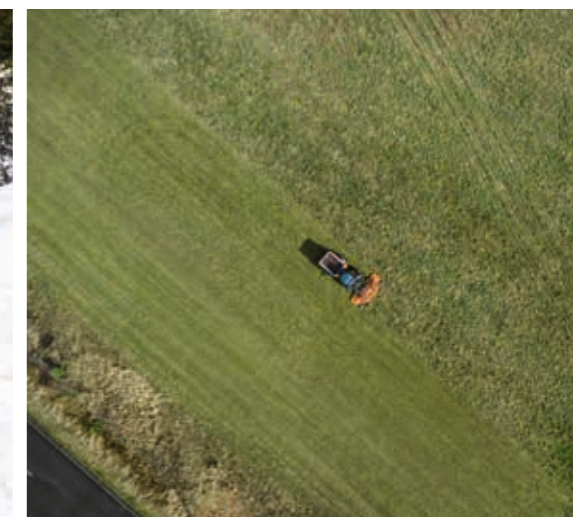
Thanks to unique design features and technical solutions, the Holder S 75 can perform the most diverse range of tasks for you, all at the highest level.



Green space maintenance

Winter service

Wet cleaning



**The Holder S 75 is multifunctional and can be used in every season. In just a few steps, for instance, it can be converted to winter service, green space maintenance or watering.**

Frost and ice are an inevitability. Thanks to the permanent all-wheel drive and four equal-sized wheels, the Holder S 75 provides outstanding traction even in wintry conditions. The smart load limit control is particularly effective when snow throwing. It ensures that the driving speed automatically adapts in response to the decrease in performance on the front implement.

**When tending green spaces in the summer months, you can't help but be impressed by the Holder S 75.**

Flexible connection and attachment options, climbing ability and manoeuvrability, and high area performance mean you can mow and mulch in virtually all locations and conditions.





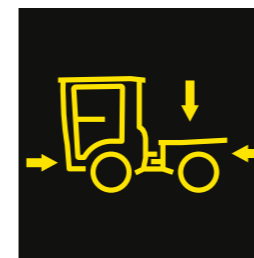
# THE HOLDER S 75 WILL DO EVERYTHING FOR YOU. EXCEPT COMPROMISE.

**Want to mow and pick up green waste in the same process? No problem: with three implement spaces, a wide range of implement combinations are possible.**

More flexible working, higher productivity, more impact: with three implement spaces, the Holder S 75 opens up a world of opportunities. The hydraulically tilting mounting frame in conjunction with an axle load of 3.2 tonnes enables implements to be mounted with optimum weight distribution, as the load is positioned centrally above the rear axle.

## **Quick implement changes**

The thoughtfully engineered design with standardised interfaces makes changing implements on the Holder S 75 quick and easy. Front implements are attached via two coupling hooks on the front lifting system, rear implements simply slot onto the mounting frame.



## **BENEFITS TO YOU**

- Diverse applications
- Quick-change system
- Manoeuvrability using implements
- Low centre of gravity
- Simultaneous operation of two implement functions
- High productivity thanks to implement combinations



# READY FOR ANYTHING

The powerful front linkage (CAT II) with a lifting force of 2,700 kg can handle even large, heavy implements.

One person can single-handedly and effortlessly attach or remove implements using the separate external control. A unique feature is the three-dimensional movement of the front linkage over the central hinge. You can use the joystick not only for raising and lowering, but also to adjust the tilt and move the implement sideways.

## BENEFITS TO YOU

- Suitable for heavy implements
- Compatible with existing implements
- Perfectly adapts to the ground conditions
- Weight compensation for ground protection and higher traction
- No pendular compensation needed on the implement
- Side shift for more range
- Optimum results

### HIGH-PERFORMANCE HYDRAULICS

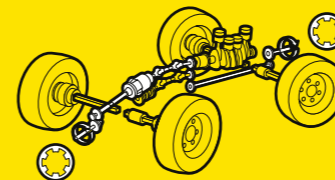


With outputs of 0–100 l/min and 0–35 l/min, you have access to two extra drive options in addition to the mechanical PTO shaft.

#### Benefits to you

- High hydraulic performance
- Compatible with existing hydraulic implements
- Multiple applications can be combined
- Compatible with PTO shaft, e.g. mowing suction

### MECHANICAL PTO SHAFT



Thanks to the direct, low-loss mechanical drive shaft of the mechanical PTO shaft, implements with high power consumption can be operated efficiently.

#### Benefits to you

- Lower fuel consumption
- No heating or mixing of the hydraulic oil
- Increased continuous power
- Larger implement dimensions

### VIBRATION DAMPING



To balance out peak loads on transport journeys, the front linkage is fitted with hydraulic vibration damping.

#### Benefits to you

- Faster transport journeys
- Increased driving safety
- Improved driving comfort
- Protects vehicle and implement



# THE HOLDER S 75







# A PERFECT FIT

The Holder S 75 comes with lots of handy features. You can expect a high level of driving and operational comfort whatever the weather.



**Climb in, get comfy, and off you go - in the ROPS comfort cab, you can enjoy perfect visibility and maximum comfort.**

Even taller or heavier drivers will find the glazed cab of the Holder S 75 spacious and comfortable. The perfect conditions for long working days:

- 360° all-round visibility
- Air conditioning
- Air-sprung, heated comfort seat with optional 3-point seatbelt

All controls are within easy reach of the driver and are intuitive to operate. So working is straightforward and safe, and you avoid fatigue.

- Adjustable armrest fitted to the seat
- One-handed operation
- Most important functions on joystick, including forwards/reverse and control valve operation



# SEE YOUR JOB THROUGH NEW EYES

**YOUR NEW WORKSPACE**

- Wide-opening doors
- Sliding windows
- Air-sprung comfort seat
- Operating console
- Integrated heater and air conditioning
- Heated windscreen
- Heated exterior mirrors
- LED working spotlights



# POWER IN EVERY SITUATION

Kärcher Municipal combines decades of municipality expertise with pioneering technology. Holder S 75 is testament to this.



## Maximum transfer of traction

At the heart of the Holder S 75 drive train is the two-part transfer case positioned in the joint area. It distributes the power variably to the two axles as required, balancing out the traction differences. The result: a transfer of drive performance that is 100% at all times. The hydrostatic components built into the gearbox facilitate infinitely variable driving, while also maintaining all the benefits of a mechanical drive, such as mechanical gear reduction. When driving off-road or on slippery surfaces, you can switch on the mechanical differential locks as required, with 100% locking effect on both axles.

## Clean, powerful and futureproof

The powerful 3.6 l Deutz turbo diesel engine meets the current requirements for STAGE V/Tier 4 Final emission standards without any additional SCR system (DEF). Thanks to the large cubic capacity, the maximum torque of 410 Nm and the maximum power of 75 hp apply even at 1,300 rpm. This makes light work of inclines or hill starts, even with heavy loads.

## BENEFITS TO YOU

- Powerful yet quiet drive train
- 100% drive power at all times
- Extreme climbing ability
- Can be driven at extremely slow speeds
- Low consumption
- Futureproof with latest emissions standard
- No AdBlue needed
- Low-maintenance

## Power that packs a punch

The engine delivers its maximum torque of 410 Nm from as little as 1,300 rpm, enabling you to work at lower engine speed.





# TRACTION TO SPARE



## Low centre of gravity for optimum driving stability

All the core components of the Holder S 75 drive train are incorporated deep within the vehicle. This results in superior driving stability for operations on and off the road. The ultra-wide tyres (440/50R18) with an external width of just 158 cm enable you to access even hard-to-reach areas, including on rough terrain. The position of the engine between the portal axles also makes the rear implement space extremely low for this class. This means that even with a spreader attached during winter service, you still have a clear view out the back.



## Keep moving in green spaces

The electronic load limit control automatically adapts the driving speed in response to the decrease in performance on the front implement. The advantage: You can fully focus on the job in hand and keep moving at maximum working speed.

## Patented DUAL DRIVE

The Holder S 75 boasts the patent-protected DUAL DRIVE, an infinitely variable drive concept that combines the benefits of hydrostatic transmission and mechanical gearing.

## Benefits to you

- Intuitive and infinitely variable driving when working
- Increased traction in mechanical gear
- Reduces fuel consumption on transport journeys
- Protects the hydrostatic components



# TECHNOLOGY DESIGNED TO KEEP YOU SAFE

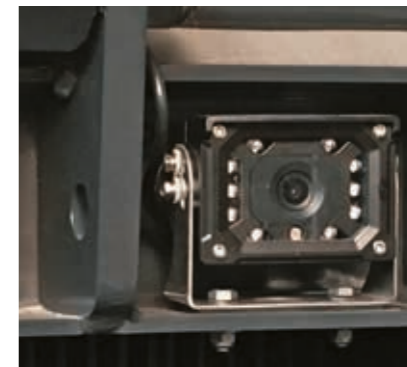
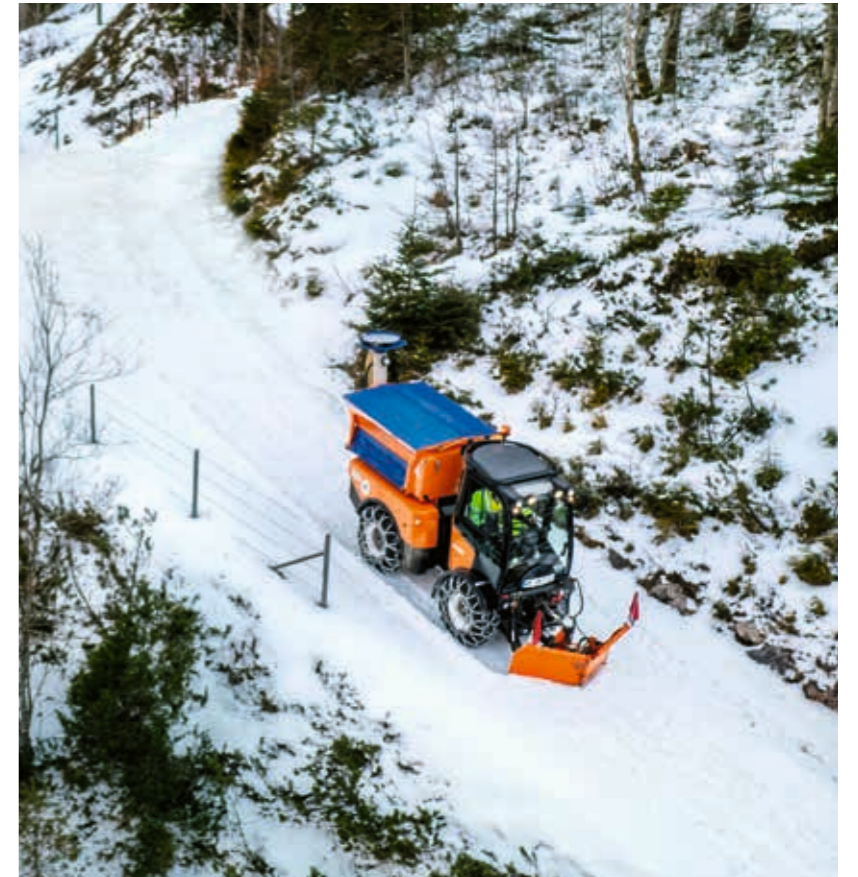
The Holder S 75 has a comprehensive array of active and passive safety features.

**Always on the safe side: countless features integrated into the design ensure the highest level of safety, in particular the load-dependent hydraulic wheel load compensation.**

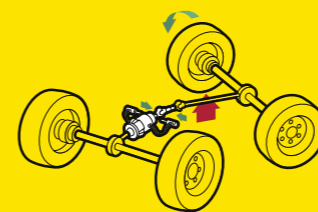
The patented system for the active stabilisation of pendular movements – a spring assembly built into the joint area – stabilises the vehicle when travelling over obstacles or on uneven terrain. The wheel load compensation ensures the vehicle continuously adapts to the ground conditions while also guaranteeing consistent driving stability.

Other safety features on the Holder S 75:

- ROPS cab
- Disc brakes, acting on all four wheels
- Automatic handbrake when the engine is switched off
- Rear-view camera
- Acoustic reverse warning system
- LED tail lights
- Seat contact switch
- Automatic battery isolating switch



## WHEEL LOAD BALANCING



Ensures constant ground contact on all four wheels.

### Benefits to you

Safety for turning on a slope, driving over the edges of pavements and for using large implements with a high centre of gravity, as well as softening the rolling motion when travelling on the road.





# WE KNOW WHAT YOU DON'T HAVE: TIME.

With easy access to all service components, the Holder S 75 is operational in next to no time.



#### **It doesn't have to be difficult**

The Holder S 75 has been purposefully designed to be easy to service. The cab can be tilted and the sides can be swivelled or folded to the left or right to open up access to vehicle components requiring maintenance.

#### **Well designed, well made**

With the Holder S 75, there's no need to remove the implements before completing daily servicing tasks. This is thanks in part to the implement space, which can be hydraulically tilted even with implements still in place. The battery can be accessed from outside, which makes things simpler if it ever needs jump starting in the winter for instance.



# HOLDER S 75



## Engine

	Deutz TCD 3.6 4-cylinder common rail turbodiesel
Power	55.4 kW
Max. torque at 1300 rpm	410 Nm
Cubic capacity	3,621 cm <sup>3</sup>
Emission standard	Stage V/Tier 4 Final, exhaust gas treatment with DOC/DPF, no SCR (DEF)
Fuel tank	84 l

## Drive

	Infinitely variable DUAL DRIVE traction drive system (combination of hydrostatic and mechanical drive) with permanent all-wheel drive and electronic load limit control
Speed	Driving speeds 0-40 km/h (fast gear)/0-20 km/h (slow gear); working speed 0-15 km/h (fast gear)/0-8 km/h (slow gear)
Differential lock	Front and rear mechanical with 100% locking effect
Service brake	Hydraulically activated wet disc brakes, active on all four wheels
Parking brake	Electric parking brake, active on both axles

## Front PTO shaft

Speed	Switchable from 540 to 1,000 rpm at 1,700 rpm engine speed
-------	--

## Hydraulics

Tandem pump volume flow	2 × 19 cm <sup>3</sup> /rev or 43.5 l/min at 180 bar, of which 0-40 l/min for implements, can be controlled from the cab, supply and return at the front and rear (optional), circuit independent of steering and lifting functions
Volume flow of implement variable displacement pump	0-120 l/min at 280 bar, of which 0-100 l/min for implements, can be controlled from the cab, supply and return at the front and rear (optional)
Hydraulic control units	Up to 4 double-acting control units
Hydraulic couplings	Up to 3 pairs of couplings at the front/up to 1 pair of couplings at the rear
Hydraulic tank	34 l with fill level sensor
Front power lift	CAT II, double-acting, with floating position and vibration damping system, optional electro-hydraulic implement release, hydraulic side and incline adjustment
Lifting force	2,700 kg

## Weight

	Includes driver of 75 kg; depending on tyre size and equipment
Unladen weight	3,100 kg
Total permissible weight	5,500 kg
Permissible axle load	Front: 3,200 kg/rear: 3,200 kg
Towing capacity	Unbraked: 2,500 kg/overrun braked: 4,500 kg

## Dimensions

	Depending on tyres/dimensions with wheel 280/80R18
Wheelbase	1,827 mm
Total length incl. front power lift	3,750 mm
Total height	2,270 mm
Total outer width	1,310 mm
Turning circle radius outside	7,000 mm







# KÄRCHER MUNICIPAL IS THE ANSWER

Kärcher Municipal offers you a complete vehicle portfolio with a wide variety of models. From pure sweeper to extremely versatile implement carrier. In performance classes for every requirement.

Discover your all-rounder at [www.kaercher-municipal.com](http://www.kaercher-municipal.com)



# KÄRCHER

makes a difference

We would be happy to advise you:

## Germany

Kärcher Municipal GmbH  
Mahdenstraße 8  
72768 Reutlingen  
Phone +49 7121 930729-0  
Fax +49 7121 930729-213  
info@municipal.karcher.com  
www.karcher-municipal.com

## USA

Kärcher Municipal  
North America Corp.  
3 Allied Drive  
Suite 303  
Dedham, MA 02026  
Phone +1 844 332-3200  
Fax +1 613 443-9600  
www.karchermunicipal-na.com

## Canada

Kärcher Municipal  
North America Inc.  
100 Bay Street  
Embrun, ON  
K0A 1W1  
Phone +1 613 443-3200  
Fax +1 613 443-9600  
www.karchermunicipal-na.com

## United Kingdom

Kärcher (UK) Ltd  
Kärcher House  
Brookhill Way  
Banbury  
Oxon OX16 3ED  
Phone +44 1295 752-000  
Fax +44 1295 752-103  
www.karcher.co.uk

## Ireland

Kärcher Ltd (Ireland)  
Unit 3, Redcow Retail Centre  
Robinhood Road  
Ballymount, Dublin 22  
D22 PY03  
Phone +353 1 409-7777  
Fax +353 1 409-7775  
www.karcher.ie

## India

Kärcher Cleaning System Pvt. Ltd.  
A-42/4, Sector-62  
Noida - 201 309  
Uttar Pradesh  
For Sales Query:  
info.in@karcher.com  
For Service Query:  
service.in@karcher.com  
www.karcher.com/in

## South East Asia

Kärcher Singapore Private Limited  
3 Depot Close, #01-01  
Singapore 109840  
Phone +65 6897 1811  
For Service enquiries:  
service-sg@karcher.com  
For Sales enquiries:  
sales-sg@karcher.com  
www.karcher.com/sg/

Kärcher Limited Taiwan  
No. 502 Yuanshan Road  
Zhonghe District  
New Taipei City  
Taiwan 23545

Phone +886 2 2221-0698  
Fax +886 2 2221-1695  
www.karcher.com/tw/

## Australia

Kärcher Pty Ltd  
385 Ferntree Gully Road  
Mount Waverley  
Victoria, AU 3149  
Phone 1800 675-714  
(Free Call)  
www.karcher.com.au

## New Zealand

Kärcher Ltd  
66 Allens Road  
East Tamaki  
Auckland 2013  
Phone +64 9 274-4603  
Fax +64 9 274-6932  
www.karcher.co.nz

## North Africa

Kärcher SARL  
Immeuble Yasmine Tower  
Bloc A 6ème étage, bureau A 6.6  
Centre Urbain Nord  
1082 Tunis  
Tunisia  
Phone +216 36339020  
info@tn.karcher.com  
www.karcher.tn

## East Africa

Kärcher Limited  
Williamson House  
P.O. Box 40111 G.P.O Nairobi  
4th Ngong Avenue  
Nairobi West District  
00100 Nairobi  
Kenya  
Phone +254 722205782  
info@ke.karcher.com  
www.karcher.com/ke

## South Africa

Kärcher (Pty) Ltd  
P.O. Box 1509  
2 North Rand Road  
Hughes Ext 72  
Boksburg  
1459  
Johannesburg  
Phone +27 11 657-7300  
Fax +27 11 657-7440  
www.karcher.co.za

## Middle East

Kärcher FZE  
Quality Cleaning Systems  
Jebel Ali Free Zone  
Plot No. S-10104 South Zone  
RA 08, XB 1, Jebel Ali  
Dubai  
Phone +971 4 886-1177  
Fax +971 4 886-1575  
customercare@ae.karcher.com  
www.karcher.ae

Optimal advice, sales and service with your Kärcher Municipal partner: