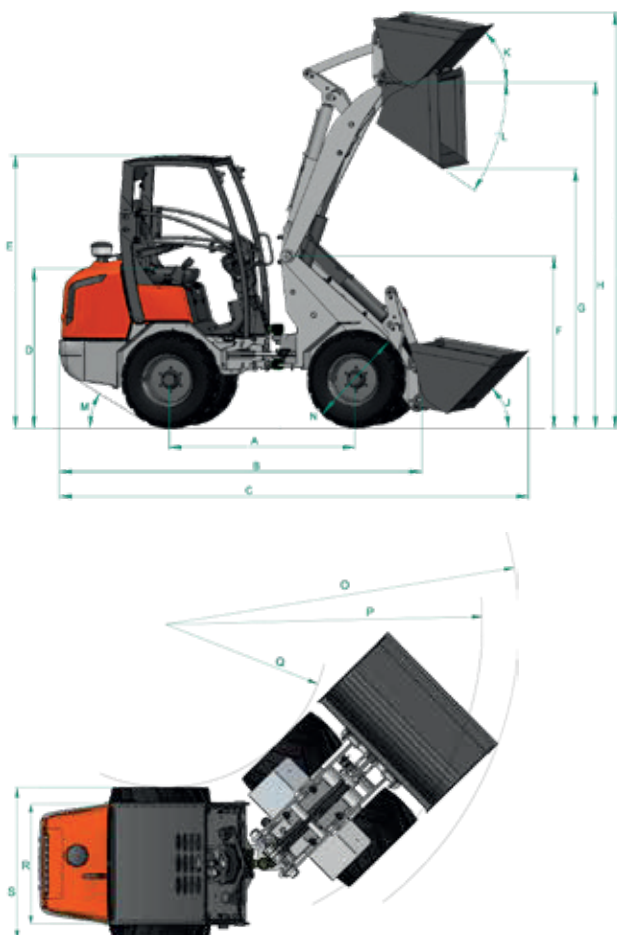


# Dimensions

Machine dimensions\*

Model		RT100-2	RT105T-2
<b>A</b>	Wheel base	mm 1205	1247
<b>B</b>	Overall length without bucket	mm 2211	2265
<b>C</b>	Overall length with bucket	mm 2911	2927
<b>D</b>	Seat height	mm 1020	1020
<b>E</b>	Overall height	mm 2060	2060
<b>F</b>	Front frame height	mm 1380	1310
<b>G</b>	Dumping height	mm 1408	2060
<b>H</b>	Max. height at hinge pin	mm 2170	2740
<b>I</b>	Max. lifting height at bucket	mm 2976	3300
<b>J</b>	Roll back angle at ground level	° 43	43
<b>K</b>	Roll back angle at max. height	° 45	50
<b>L</b>	Dumping angle	° 46	40
<b>M</b>	Rear climbing angle	° 34	34
<b>N</b>	Diameter of standard wheel	mm 570	570
<b>O</b>	Turning radius with bucket	mm 2225	2225
<b>P</b>	Turning radius (outer wheel)	mm 1967	1967
<b>Q</b>	Turning radius (inner wheel)	mm 978	978
<b>R</b>	Tread	mm 815	815
<b>S</b>	Overall width	mm 920	920
—	Articulation angle	° 40	40
—	Ground clearance	mm 120	120

★ The data have been measured on the standard version.  
Specifications are subjects to be changed without notice.



# Specifications

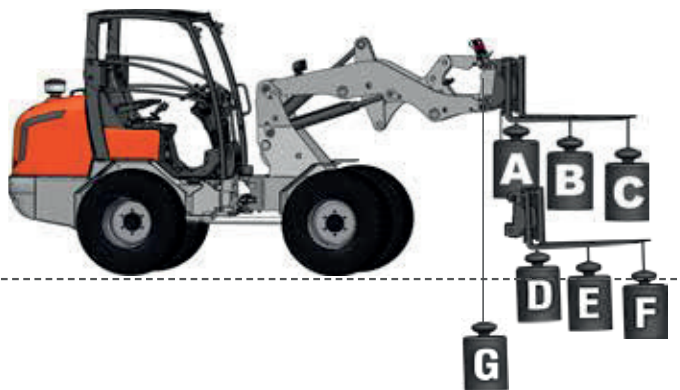
Model		RT100-2	RT105T-2
	A kg	800	
	B kg	550	
	C kg	410	
	D kg	1690	
	E kg	840	
	F kg	510	
	G kg	840	

**Operational specifications**  
**with pallet fork in straight**  
**position (ISO 14397)**  
**and tipping Load (G)**  
**measured on hinge point\***

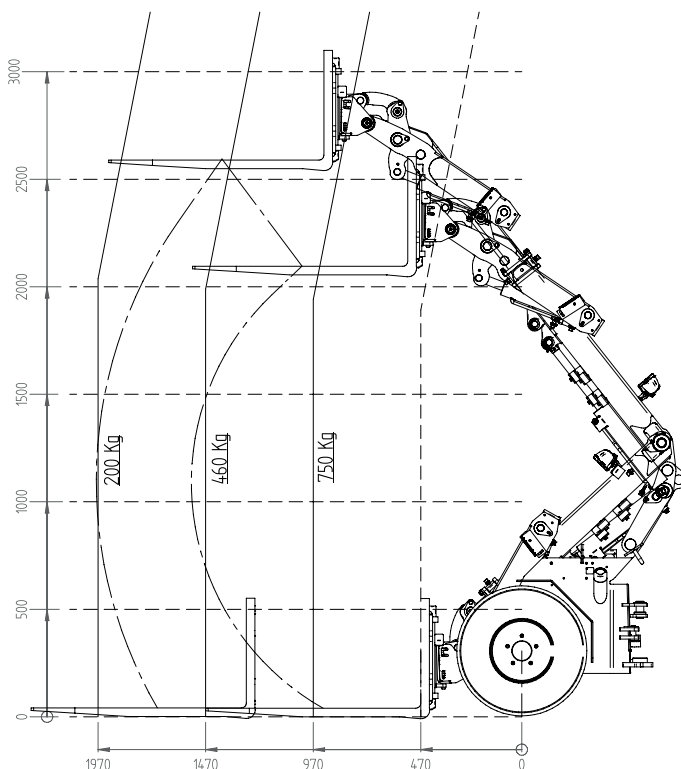
See lifting  
chart

★ Tipping load measured on hinge point in straight position, standard tires,  
no additional counterweight.

## RT100-2



## RT105T-2



★ All images shown are for brochure purposes only.

When operating the wheel loader, wear clothing and equipment in accordance to local legal and safety regulations.

To configure this machine to your specification,  
please contact your Kubota dealer.

**KUBOTA (U.K.) Limited**  
Dormer Road Thame  
Oxfordshire OX9 3UN  
Telephone: 01844 268000  
www.kubota.co.uk

